



Reproductive Health Integration Initiative

Solicitation of Offers Informational Call

April 21, 2022

Cara McCarthy, MPH

Reproductive Health Strategy Manager

*Louisiana Department of Health, Office of Public Health, Bureau of Family Health,
Reproductive Health Program*

Reproductive Health Integration Initiative

Goal

- To reduce unintended or mis-timed pregnancy and improve health outcomes – reproductive health (RH) and overall – by increasing access to comprehensive, high-quality reproductive health services, provided as part of a client-centered care approach

Model

- Integrate RH into primary care services by screening all clients of reproductive age (15-44) for need for RH services
- Address reproductive health needs during visit (internal referrals)

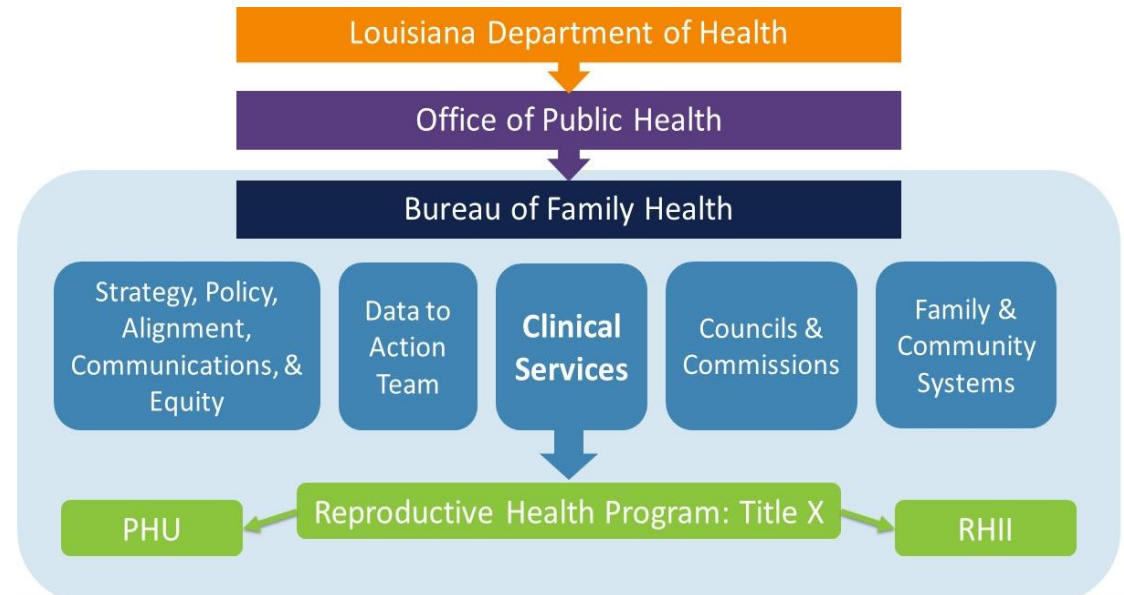
Method

- Provide tailored training and technical assistance to selected Community Health Centers sub-recipient sites
-

Title X Program

The Title X Family Planning Program is the only federal program dedicated solely to the provision of family planning and related preventive health services. *RHP has been the sole Louisiana grantee for over 40 years.*

- No referral of durational residency requirement
- Provided in a manner protecting the dignity of the individual
- Coordination and referrals with other social and healthcare providers
- Services are provided to all who want and need them



Suite of RH Services

Reproductive Health Services

- Contraceptive services
 - Broad range of methods
- Sexually transmitted infection (STI) services
- Pregnancy testing and counseling
- Achieving pregnancy
- Basic infertility services
- Pre/interconception health
- Postpartum care

Related and other preventive health services

- E.g., Screening for breast and cervical cancer
- E.g., Screening for lipid disorders

Centers for Disease Control and Prevention

MMWR

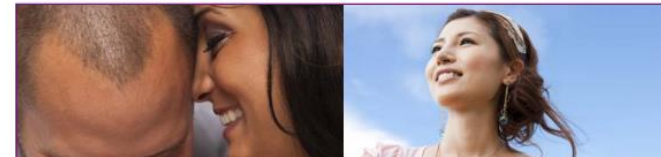
Recommendations and Reports / Vol. 63 / No. 4

Morbidity and Mortality Weekly Report

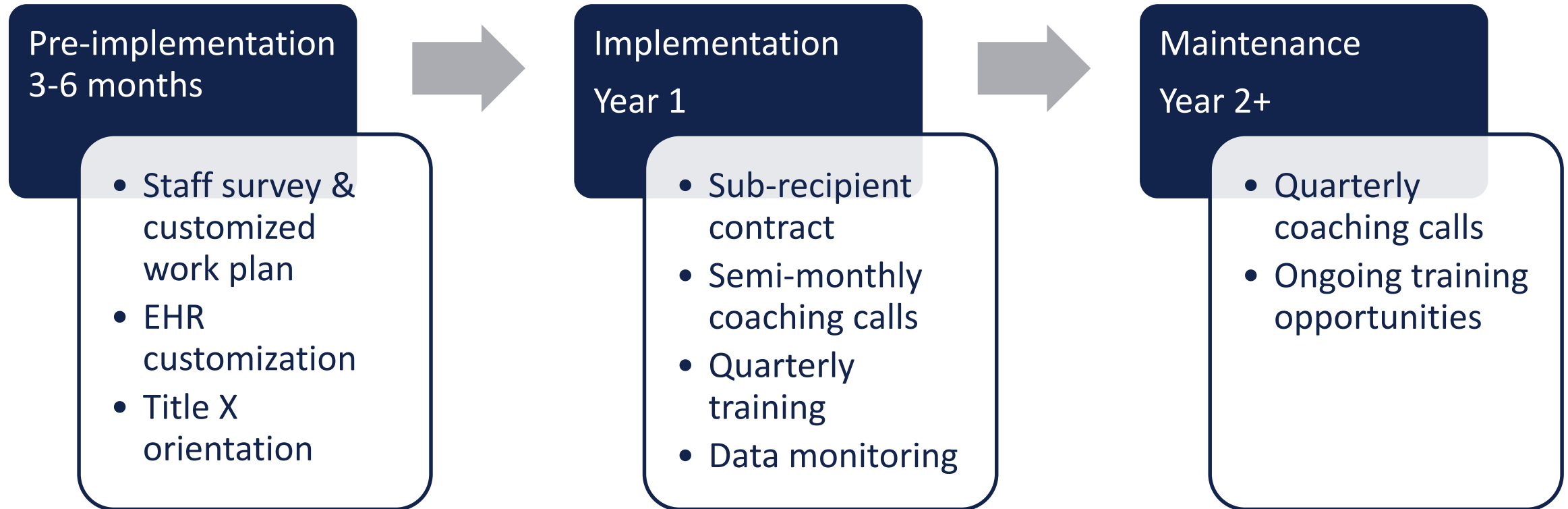
April 25, 2014

Providing Quality Family Planning Services

Recommendations of CDC and the U.S. Office of Population Affairs



Implementation Process



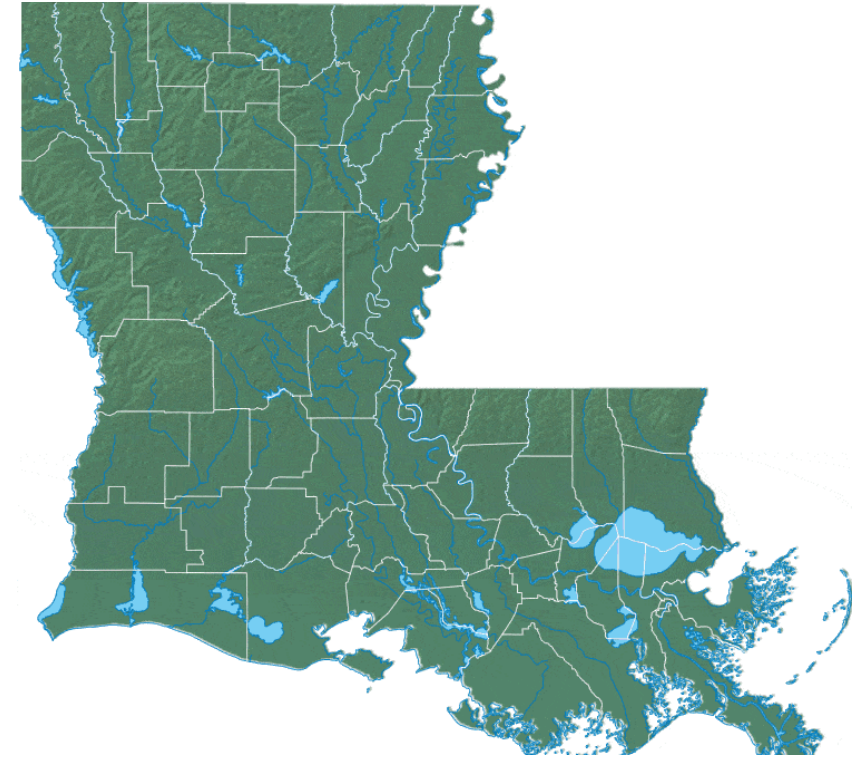
Why Integrate Reproductive Health Services?

- Triple Aim: Better care, better outcomes, lower costs
- Allows health providers to move from reactive → proactive when addressing RH needs
- Louisiana has a high unmet need

Need for RH Services in Louisiana

	2018 Diagnoses	Ranking	2019 Diagnoses	Ranking	2020 Diagnoses	% Change 2019 to 2020
P&S Syphilis	699	3 rd	700	12 th	704	1%
Congenital Syphilis	43	1 st	68	7 th	63	7%
Gonorrhea	12,043	3 rd	12,800	2 nd	15,483	21%
Chlamydia	36,293	2 nd	36,131	2 nd	32,997	9%
HIV	973	4 th	881	4 th	725*	18%*

*Final HIV ranking not released



What Patients Want

U.S. patients

- 73% prefer provider to bring up sexual health
- 70% of respondents (US consumer poll) had experienced a sexual health issue

U.S. healthcare providers:

- 74% stated they rely on patients to initiate sexual health discussion
 - 40% routinely screened for sexual problems
 - 29% asked about sexual satisfaction
 - 28% routinely confirm patient's sexual orientation
-

Elements of RH Integration

- Gain buy-in from leadership
- Stock contraceptive and STI testing supplies
- Train clinical and non-clinical staff
- Develop workflows for reproductive health services
- Utilize evidence-based clinical practices
- Inform clients of availability of services

Reproductive Health Assessments

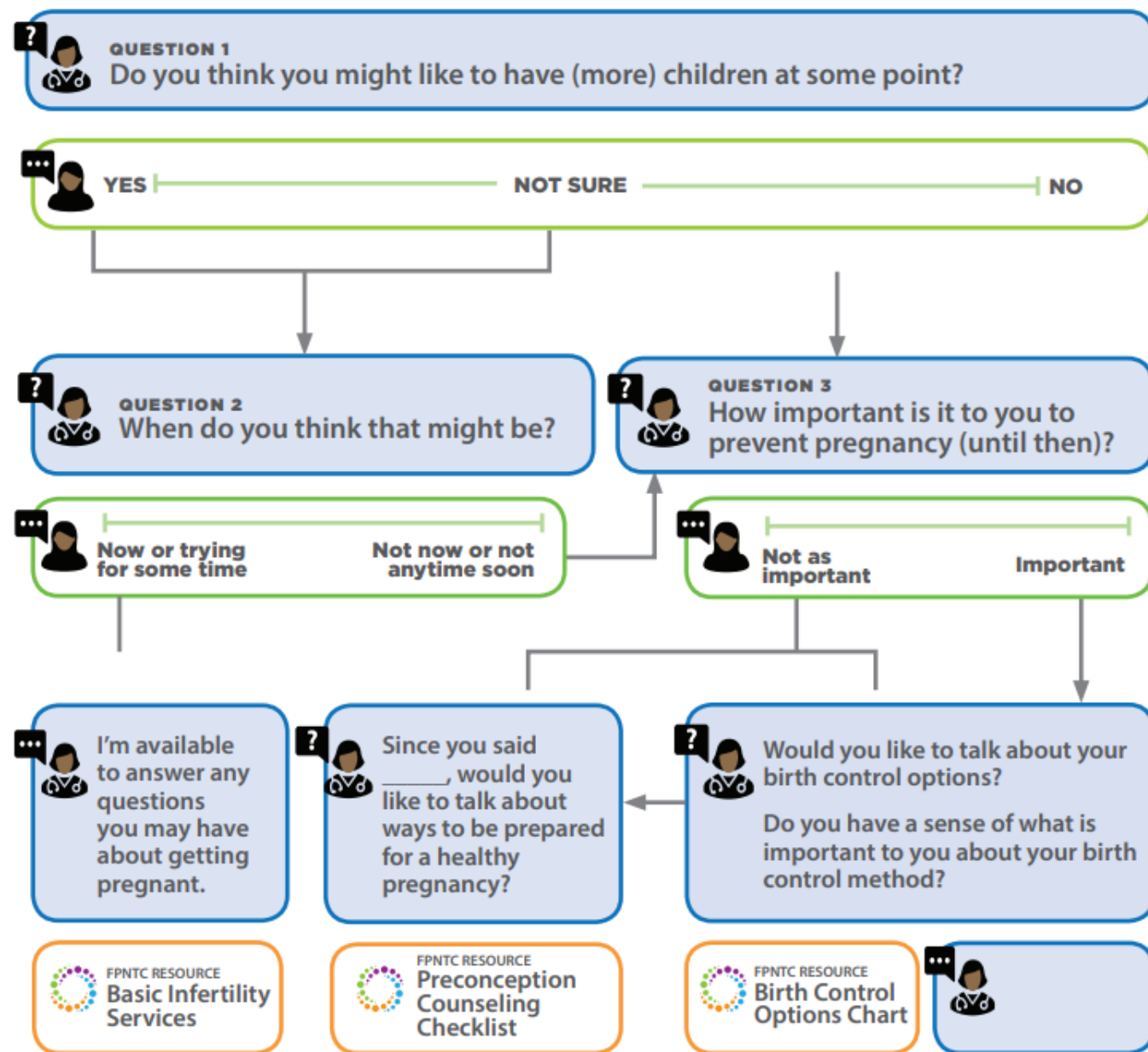
At every visit, assess all clients and their partners who are at risk for unintended pregnancy and sexually transmitted infections (STI) in order to:

- Assist clients and their partners who are not planning a pregnancy in the near future choose the best contraceptive method for them
- Provide or refer for recommended STI testing and treatment
- Educate clients on prevention practices

Client-Centered Reproductive Goals & Counseling Flow Chart

The PATH questions are one client-centered approach to assess Parenthood/Pregnancy Attitude, Timing, and How important is pregnancy prevention. PATH can be used with clients of any gender, sexual orientation, or age. PATH is designed to facilitate listening and efficient client-centered conversations about preconception care, contraception, and fertility as appropriate.

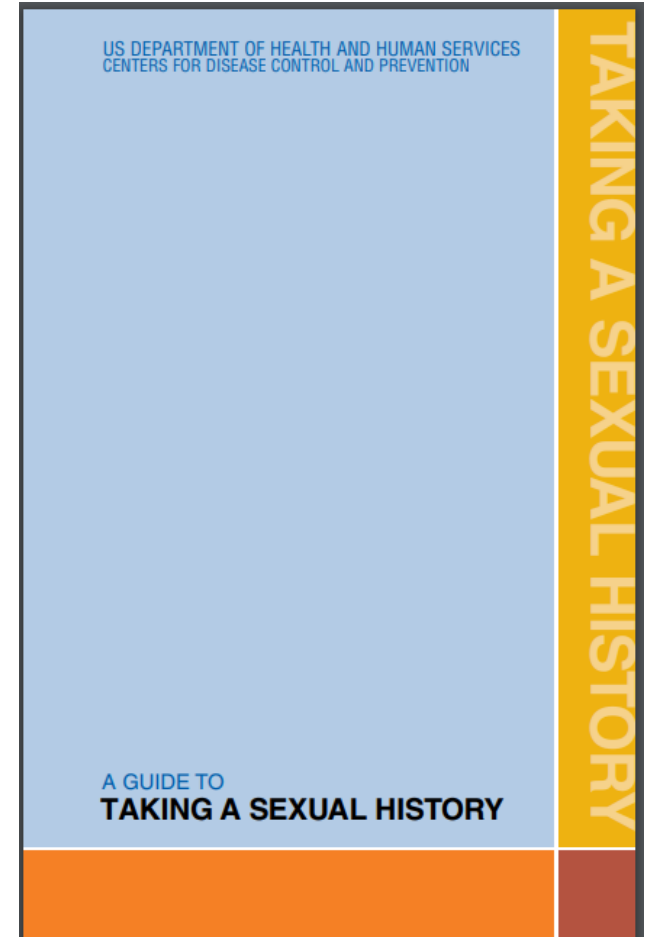
<https://www.fpntc.org/resources/client-centered-reproductive-goals-counseling-flow-chart>



Sexual Risk Behavior Screening

Brief screening question:

- How do you protect yourself from HIV and other infections you could get from having sex?
 - Not Sexually Active / In Monogamous Relationship / Condoms / None
 - If 'Condoms' or 'None' → additional screening questions/counseling needed
- Additional screening questions:
 - Do you use condoms/barrier methods sometimes, always, or never? (Protection)
 - Do you have sex with men, women, or both? (Partners)
 - Have you had vaginal, oral, or anal sex? (Practices)
- Provide recommended STI/HIV testing



Conducting RH Assessments Improves Health

- Learning about the reproductive health and behavior of our clients is a way to provide healthcare that is:
 - High-quality
 - Safe
 - Accessible
 - Effective
 - Preventing and treating STIs, HIV, and helping clients plan if, when, and how many children they want, can help us ***reduce negative outcomes among our clients***
 - When we show our clients that we are interested in, and compassionate about, their reproductive health we will see an ***improvement in our relationship with clients***
-

Spectrum of Integration

- Limited reproductive health services provided
 - Can prescribe only a few FP methods, report on required quality measures only
- Moderate level of services provided
 - Screen and treat symptomatic clients only, most staff trained to offer most methods
- Full integration of RH services
 - Routine screening of all clients, all methods offered on-site and same day, reproductive health specific quality measures

Measuring Success

Quality Measures

- Pregnancy intention screening
- STI risk screening
- Most or moderately effective contraceptive use
- Condom use at last intercourse
- Postpartum contraceptive care

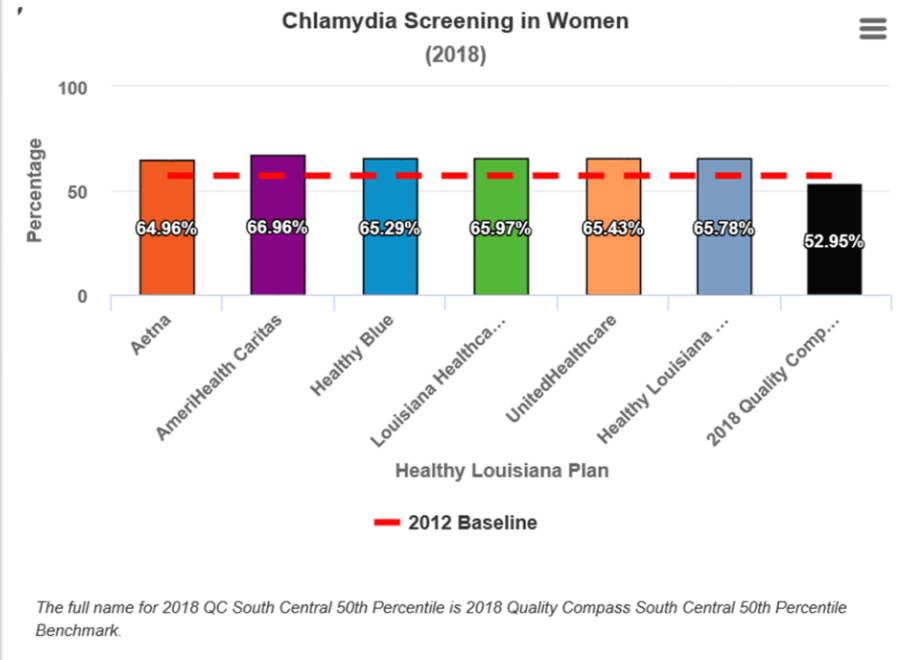
Chlamydia Screening in Women

[Details...](#)

The percentage of women 16–24 years of age who were identified as sexually active and who had at least one test for Chlamydia during the measurement year.

Why is this important?

Chlamydia screenings are needed to identify it so it can be treated to prevent complications like infertility.



RHII Application

- Deadline: May 6th at 11:59pm
 - Access application and supporting documents at healthychoicesla.org/RHII-SOO
-

Reproductive Health

Reproductive health is a state of complete **physical, mental and social well-being** and not merely the absence of disease or infirmity, in all matters relating to the **reproductive system** and to its functions and processes. Reproductive health implies that people **are able** to have a **satisfying and safe sex life** and that they have the capability to reproduce and the **freedom to decide if, when and how often** to do so.

~ The World Health Organization



Thank you

Cara.McCarthy@la.gov

healthychoicesla.org/for-providers/partners-resources